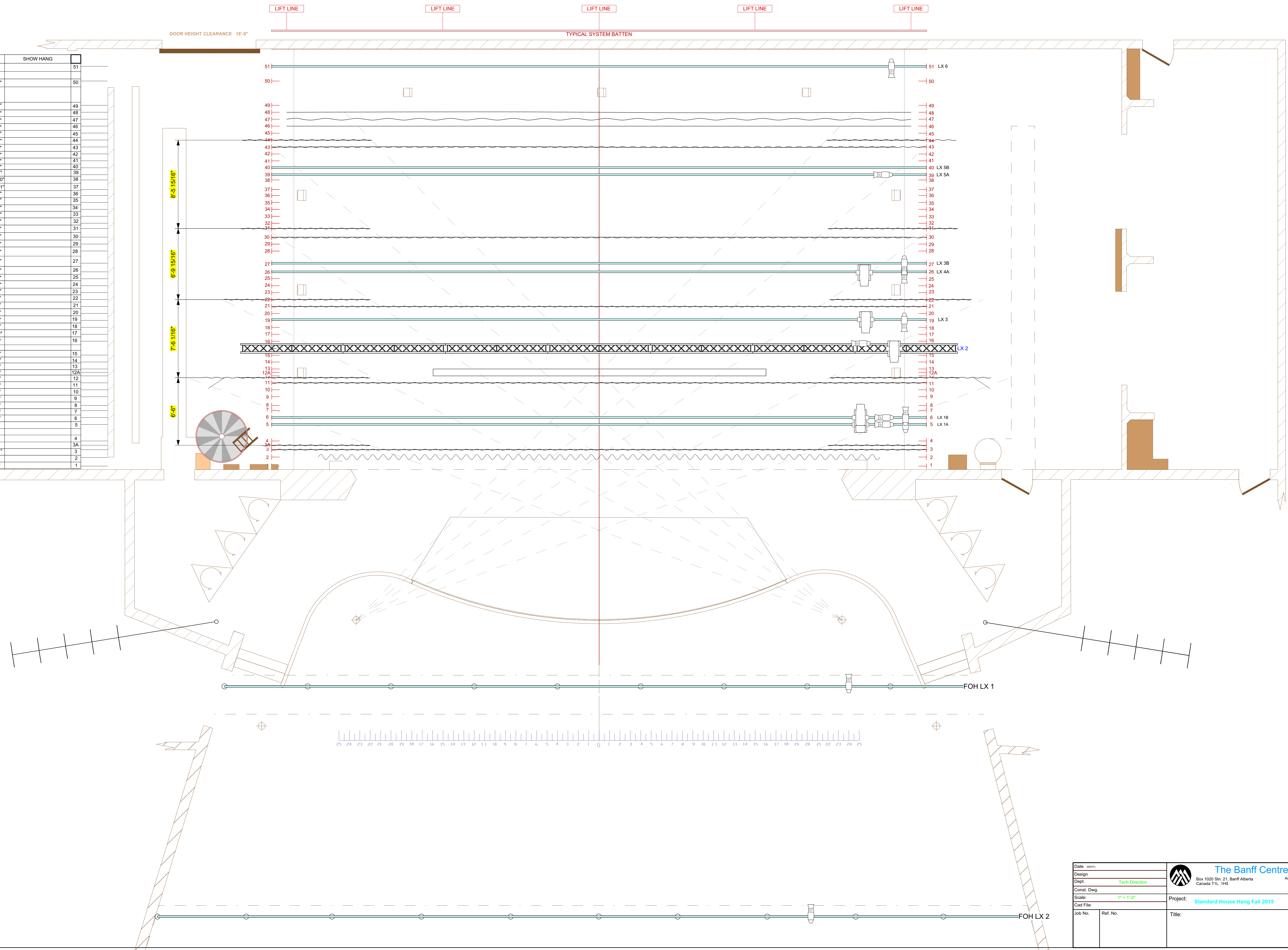

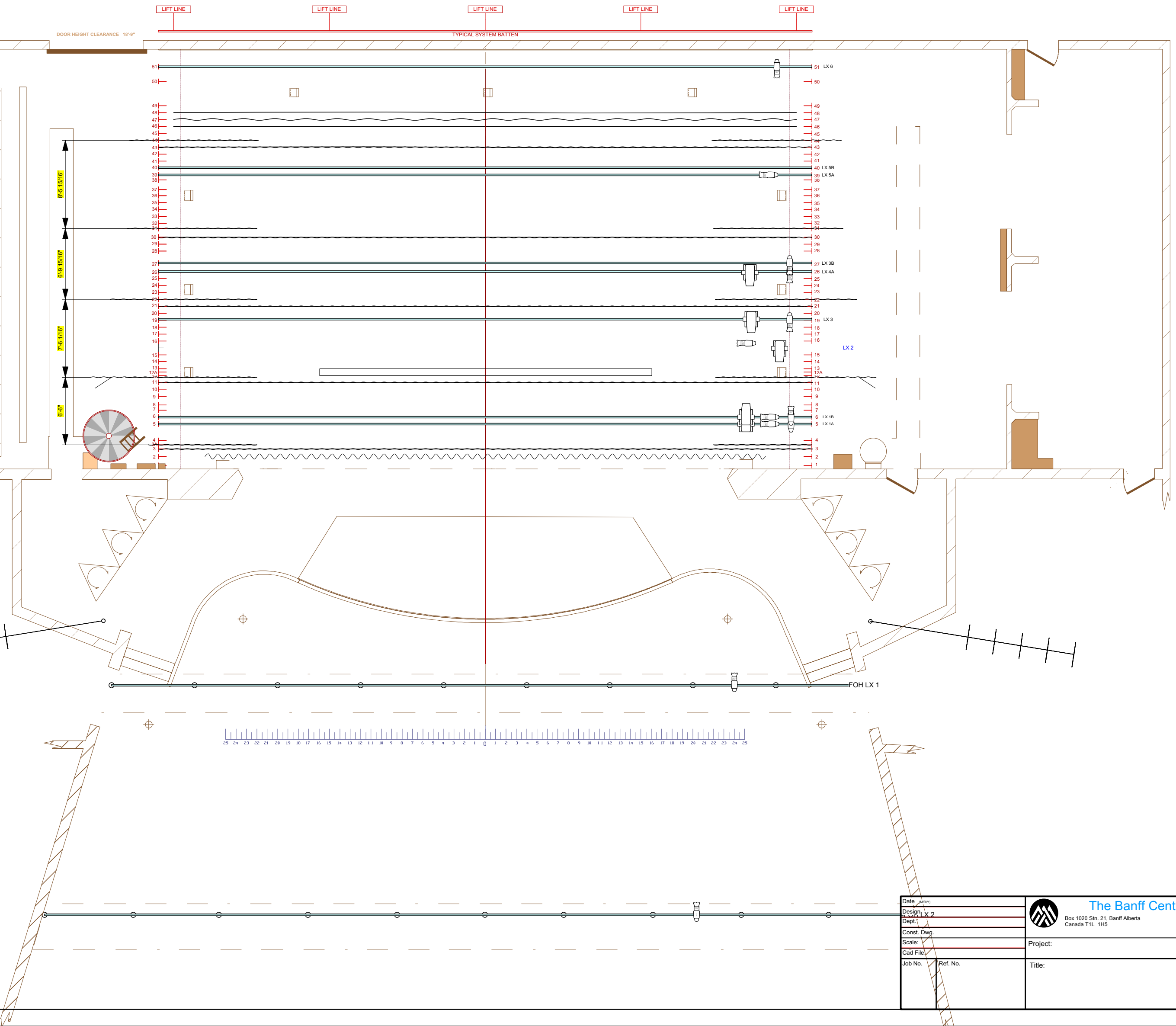



HOUSE HANG		SHOW HANG	
#7 ELECTRIC (CYC STRIPS)	38' 9"		51
#6 LEGS	37' 4"		50
	35' 0"		49
RP CYCLOPAMA	34' 4"		48
BLACK DROP	33' 8"		47
BLACK SCRIM	33' 0"		46
	32' 4"		45
#5 LEGS	31' 8"		44
#5 BORDER	31' 0"		43
	30' 4"		42
Trapped by LX	29' 8"		41
PLUG STRIP	29' 0"		40
#5 ELECTRIC	28' 4"		39
Trapped by LX	27' 10"		38
	26' 11"		37
	26' 4"		36
	25' 8"		35
	25' 0"		34
	24' 4"		33
	23' 8"		32
	23' 2"		31
#4 LEGS/TRAVELER	22' 4"		30
#4 BORDER	21' 8"		29
	21' 0"		28
PLUG STRIP	19' 8"		27
#4 ELECTRIC	19' 0"		26
	18' 4"		25
	17' 8"		24
	17' 0"		23
#3 LEGS	16' 4"		22
#3 BORDER	15' 8"		21
Trapped by LX	15' 0"		20
#3 ELECTRIC	14' 4"		19
Trapped by LX	13' 8"		18
	13' 0"		17
#2 LX PLUG STRIP	12' 4"		16
#2 ELECTRIC	11' 0"		15
	10' 4"		14
MOVIE SCREEN	9' 8"		13
SPLIT LEGS ON SANDBAG LINES	9' 4"		12A
#2 LEGS ON TRACKS	9' 0"		12
#2 BORDER	8' 4"		11
	7' 8"		10
	7' 0"		9
	6' 2"		8
Trapped by LX	5' 8"		7
#1 LX PLUG STRIP	5' 0"		6
#1 ELECTRIC	4' 4"		5
	2' 9"		4
#1 LEGS - HEMP SET	2' 4"		3A
#1 BORDER	1' 11"		3
MAIN CURTAIN	1' 2"		2
FIRE CURTAIN	0' 4"		1



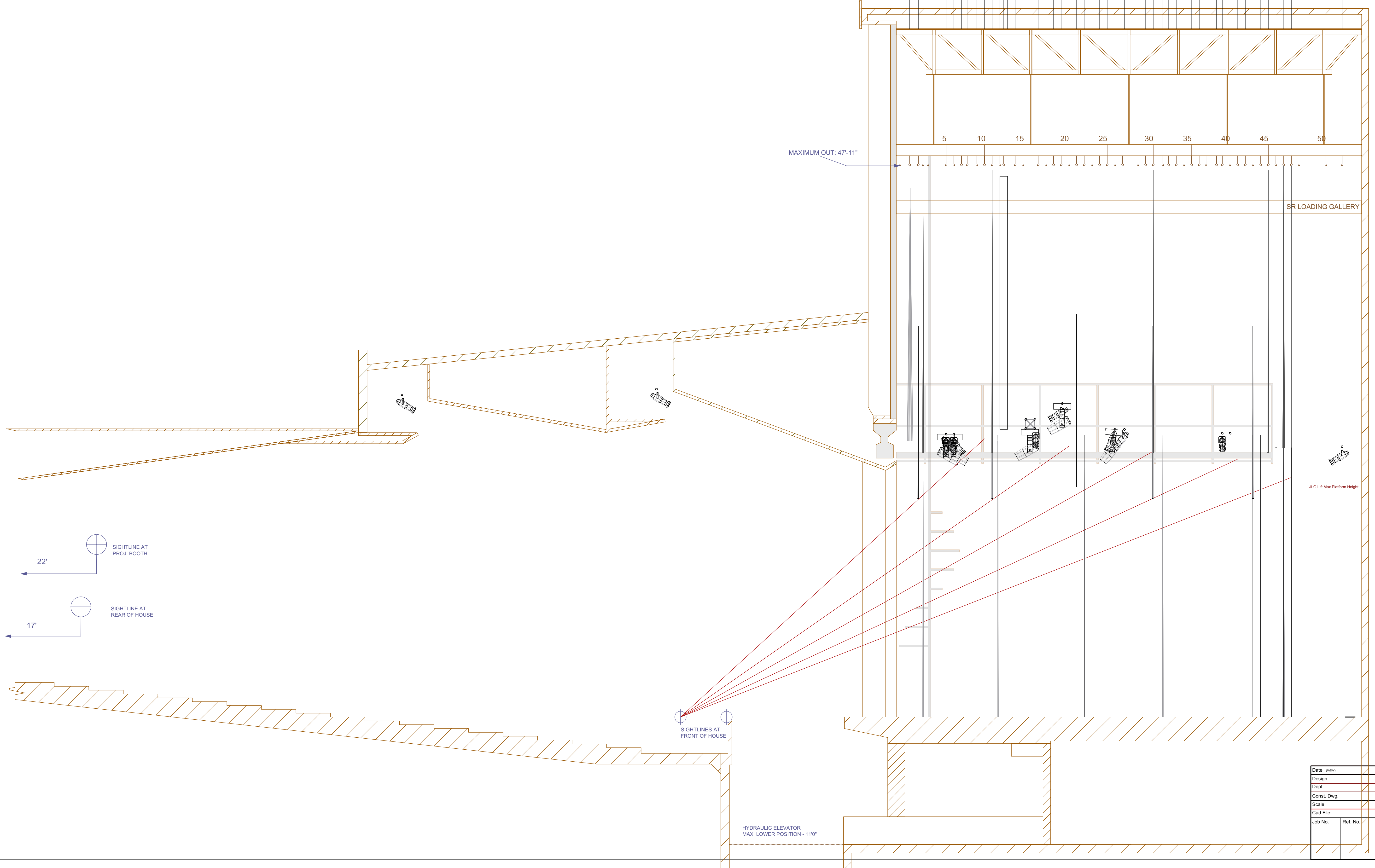
Date	Admin	 The Banff Centre Box 1020 Stn. 21, Banff Alberta Canada T1L 1Y5 Admin: (403) 762-6100 Fax: (403) 762-6334 T.D. (403) 762-6497 Shop: (403) 762-6245
Design	Tech Direction	
Const. Dwg.		
Scale:	1" = 1'-0"	
Cad File:		Project: Standard House Hang Fall 2015
Job No.	Ref. No.	Title:

HOUSE HANG	SHOW HANG	
#7 ELECTRIC (CYC STRIPS)	38'9"	51
#6 LEGS	37'4"	50
RP CYCLOPAMA	35'0"	49
BLACK DROP	34'4"	48
BLACK SCRIM	33'0"	47
#5 LEGS	32'4"	46
#5 BORDER	31'8"	45
Trapped by LX	31'0"	44
PLUG STRIP	30'4"	43
#5 ELECTRIC	29'8"	42
Trapped by LX	29'0"	41
	28'4"	40
	27'10"	39
	26'11"	38
	26'4"	37
	25'8"	36
	25'0"	35
	24'4"	34
	23'8"	33
	23'2"	32
#4 LEGS/TRAVELER	22'4"	31
#4 BORDER	21'8"	30
	21'0"	29
PLUG STRIP	19'8"	28
#4 ELECTRIC	19'0"	27
	18'4"	26
	17'8"	25
	17'0"	24
	16'4"	23
#3 LEGS	16'4"	22
#3 BORDER	15'8"	21
Trapped by LX	15'0"	20
#3 ELECTRIC	14'4"	19
Trapped by LX	13'8"	18
	13'0"	17
#2 LX PLUG STRIP	12'4"	16
#2 ELECTRIC	11'0"	15
	10'4"	14
MOVIE SCREEN	9'8"	13
SPLIT LEGS ON SANDBAG LINES	9'4"	12A
#2 LEGS ON TRACKS	9'0"	12
#2 BORDER	8'4"	11
	7'8"	10
	7'0"	9
	6'2"	8
Trapped by LX	5'8"	7
#1 LX PLUG STRIP	5'0"	6
#1 ELECTRIC	4'4"	5
	2'8"	4
#1 LEGS - HEMP SET	2'4"	3A
#1 BORDER	1'11"	3
MAIN CURTAIN	1'2"	2
FIRE CURTAIN	0'4"	1



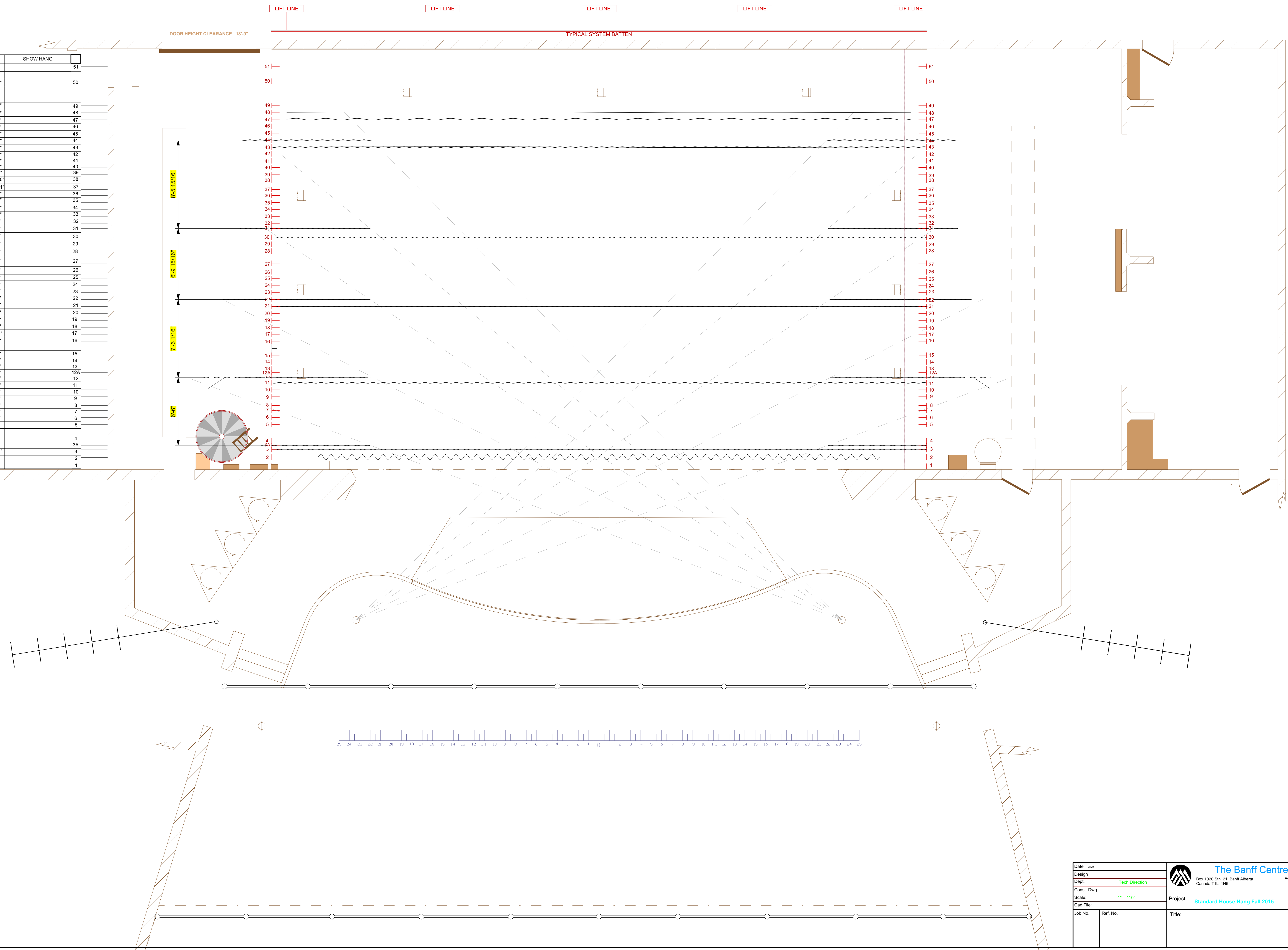
Date	11/01/11	 The Banff Centre Box 1020 Stn. 21, Banff Alberta Canada T1L 1H5	Admin (403) 762-6100
Design	X 2		Fax (403) 762-6334
Dept.			T.D. (403) 762-6497
Const. Dwg.			Shop (403) 762-6245
Scale:		Project:	
Cad File:		Title:	
Job No.		Ref. No.	


HOUSE HANG	SHOW HANG
#7 ELECTRIC (C/C STRIPS)	38'9"
#8 LEGS	37'4"
#9 LEGS	35'0"
RP CYCLOPAMA	34'4"
BLACK DRIP	33'8"
BLACK SCRM	32'2"
#1 LEGS	31'6"
#2 BORDER	30'0"
Trapped by LX	29'4"
#3 ELECTRIC	28'8"
Trapped by LX	27'10"
#4 LEGS	26'4"
#5 LEGS	25'8"
#6 BORDER	24'2"
#7 LEGS	23'6"
#8 LEGS	22'0"
#9 LEGS	21'4"
#10 LEGS	20'8"
#11 LEGS	20'2"
#12 LEGS	19'6"
#13 LEGS	19'0"
#14 LEGS	18'4"
#15 LEGS	17'8"
#16 LEGS	17'2"
#17 LEGS	16'6"
#18 LEGS	16'0"
#19 LEGS	15'4"
#20 LEGS	14'8"
#21 LEGS	14'2"
#22 LEGS	13'6"
#23 LEGS	13'0"
#24 LEGS	12'4"
#25 LEGS	11'8"
#26 LEGS	11'2"
#27 LEGS	10'6"
#28 LEGS	10'0"
#29 LEGS	9'4"
#30 LEGS	8'8"
#31 LEGS	8'2"
#32 LEGS	7'6"
#33 LEGS	7'0"
#34 LEGS	6'4"
#35 LEGS	5'8"
#36 LEGS	5'2"
#37 LEGS	4'6"
#38 LEGS	4'0"
#39 LEGS	3'4"
#40 LEGS	2'8"
#41 LEGS	2'2"
#42 LEGS	1'6"
#43 LEGS	1'0"
#44 LEGS	4"
#45 LEGS	0"



Date	Admin	<p>The Banff Centre Box 1020 Str. 21, Banff Alberta Canada T1L 1Y5</p>
Design	Admin (403) 762-6100	
Dept.	Fax (403) 762-6334	
Const. Dwg.	T.D. (403) 762-6497	
Scale	Shop (403) 762-6245	
Cad File:	Project:	
Job No.	Ref. No.	Title:

HOUSE HANG		SHOW HANG	
#7 ELECTRIC (CYC STRIPS)	38'9"		51
#6 LEGS	37'4"		50
	35'0"		49
RP CYCLORAMA	34'4"		48
BLACK DROP	33'8"		47
BLACK SCRIM	33'0"		46
	32'4"		45
#5 LEGS	31'8"		44
#5 BORDER	31'0"		43
	30'4"		42
Trapped by LX	29'8"		41
PLUG STRIP	29'0"		40
#5 ELECTRIC	28'4"		39
Trapped by LX	27'10"		38
	26'11"		37
	26'4"		36
	25'8"		35
	25'0"		34
	24'4"		33
	23'8"		32
	23'2"		31
#4 LEGS/TRAVELER	22'4"		30
#4 BORDER	21'8"		29
	21'0"		28
	19'8"		27
PLUG STRIP	19'0"		26
#4 ELECTRIC	18'4"		25
	17'8"		24
	17'0"		23
#3 LEGS	16'4"		22
#3 BORDER	15'8"		21
Trapped by LX	15'0"		20
#3 ELECTRIC	14'4"		19
Trapped by LX	13'8"		18
	13'0"		17
#2 LX PLUG STRIP	12'4"		16
#2 ELECTRIC	11'0"		15
	10'4"		14
MOVIE SCREEN	9'8"		13
SPLIT LEGS ON SANDBAG LINES	9'4"		12A
#2 LEGS ON TRACKS	9'0"		12
#2 BORDER	8'4"		11
	7'8"		10
	7'0"		9
	6'2"		8
Trapped by LX	5'8"		7
#1 LX PLUG STRIP	5'0"		6
#1 ELECTRIC	4'4"		5
	2'9"		4
#1 LEGS - HEMP SET	2'4"		3A
#1 BORDER	1'11"		3
MAIN CURTAIN	1'2"		2
FIRE CURTAIN	0'4"		1



Date	Admin	 The Banff Centre Box 1020 Str. 21, Banff Alberta Canada T1L 1Y5 Admin: (403) 762-6100 Fax: (403) 762-6334 T.D.: (403) 762-6497 Shop: (403) 762-6245	
Design			
Dept.	Tech Direction		
Const. Dwg.			
Scale:	1" = 1'-0"	Project:	Standard House Hang Fall 2015
Cad File:		Job No.:	Ref. No.:
Job No.:		Title:	